



Quick Change High Speed Boring Tools

Ø5mm~Ø50mm boring bars are Interchangeable.
Change the boring bar in just one minute.
G6.3 10000 r.p.m. pre-balanced.

High Speed

- Boring bar design ensures accurate high speed boring. Grade balance is G6.3 10000 r.p.m.
- Surface speeds of carbide inserts up to 2300 SFM.

Low Cost

- The cost of this product is low compared to other micro adjustable boring heads.

Simplistic Yet Accurate

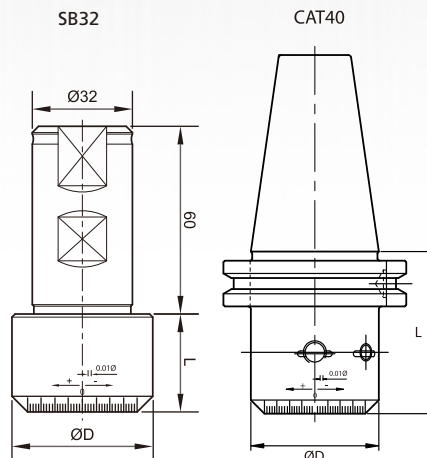
- Dimensions are easy to read. They are indicated on the tools and are easily adjustable on a tool presetter or in machining center.
- No backlash.
- Change the boring bar and set the boring dimension on the tool presetter in just one minute.
- This simple boring tool has minimal components.

Boring Head Shank

- Adjustable range: +0.12 /-0.13 mm. (.010")
- Each division is 0.01 mm. (.0004")

Part No.	ØD	L
BT30-146-51	45	51.3
BT40-146-56	45	56.3
BT50-146-77	45	77.3
CAT40-146-56 [†]	45	56.3
HSK63A-146-72	45	72
SB32-146-01 [†]	45	31.3

[†]Stocked in the U.S.



Integral Heads 5mm - 50mm
See reverse side. Stocked in U.S.A.



Carbide Small Bar Program

ADAPTER

Economical solution -- small diameter boring bar.



Ø4.87~ 20.12mm
Solid Carbide Shank
Boring Depth : L1, 4~6xD



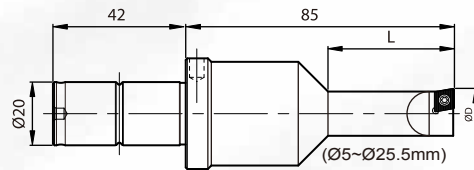
For full line of small diameter carbide boring bars and adapters, visit our web site at www.everede.net.
Not all sizes are stocked in the U.S.

EVEREDE TOOL COMPANY
Everede Tool Company is the exclusive Nine9 marketer and importer in the United States.

Vist www.everede.net for our full line brochure.

Stock in USA

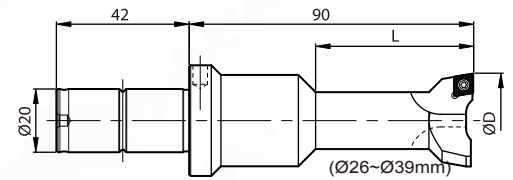
• Alloy Steel



Part No.	ØD	L	Insert
C20-0500-10L	4.87~5.12	10.00	CCGT030102-NC30
C20-0600-12L	5.87~6.12	12.00	NS-16030, NK-T6
C20-0700-14L	6.87~7.12	14.00	CCGT040102-NC30
C20-0800-16L	7.87~8.12	16.00	NS-20045, NK-T6
C20-0900-20L	8.87~9.12	18.00	CCGT060204 CCFT060204 Select grade from cutting data chart. Screw: NS-20045 Key: NK-T7
C20-1000-25L	9.87~10.12	25.00	
C20-1025-25L	10.12~10.37	25.00	
C20-1050-26L	10.37~10.62	26.25	
C20-1075-26L	10.62~10.87	26.25	
C20-1100-27L	10.87~11.12	27.50	
C20-1125-27L	11.12~11.37	27.50	
C20-1150-28L	11.37~11.62	28.75	
C20-1175-28L	11.62~11.87	28.75	
C20-1200-30L	11.87~12.12	30.00	
C20-1225-30L	12.12~12.37	30.00	
C20-1250-31L	12.37~12.62	31.25	
C20-1275-31L	12.62~12.87	31.25	
C20-1300-32L	12.87~13.12	32.50	
C20-1325-32L	13.12~13.37	32.50	
C20-1350-33L	13.37~13.62	33.75	
C20-1375-33L	13.62~13.87	33.75	
C20-1400-35L	13.87~14.12	35.00	
C20-1425-35L	14.12~14.37	35.00	
C20-1450-36L	14.37~14.62	36.25	
C20-1475-36L	14.62~14.87	36.25	
C20-1500-37L	14.87~15.12	37.50	
C20-1525-37L	15.12~15.37	37.50	
C20-1550-38L	15.37~15.62	38.75	
C20-1575-38L	15.62~15.87	38.75	
C20-1600-40L	15.87~16.12	40.00	
C20-1625-40L	16.12~16.37	40.00	
C20-1650-41L	16.37~16.62	41.25	
C20-1675-41L	16.62~16.87	41.25	
C20-1700-42L	16.87~17.12	42.50	
			CCGT060204 CCFT060204 Screw: NS-20060 Key: NK-T7

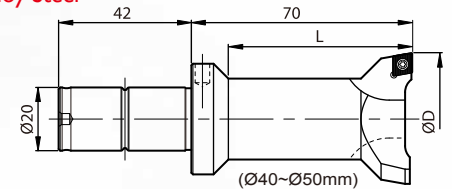
Part No.	ØD	L	Insert
C20-1725-42L	17.12~17.37	42.50	CCGT060204 CCFT060204 Select grade from cutting data chart. Screw: NS-20045 Key: NK-T7
C20-1750-43L	17.37~17.62	43.75	
C20-1775-43L	17.62~17.87	43.75	
C20-1800-45L	17.87~18.12	45.00	
C20-1825-45L	18.12~18.37	45.00	
C20-1850-46L	18.37~18.62	46.25	
C20-1875-46L	18.62~18.87	46.25	
C20-1900-47L	18.87~19.12	47.50	
C20-1925-47L	19.12~19.37	47.50	
C20-1950-48L	19.37~19.62	48.75	
C20-1975-48L	19.62~19.87	48.75	
C20-2000-50L	19.87~20.12	50.00	
C20-2025-50L	20.12~20.37	50.00	
C20-2050-50L	20.37~20.62	50.00	
C20-2075-50L	20.62~20.87	50.00	
C20-2100-50L	20.87~21.12	50.00	
C20-2125-50L	21.12~21.37	50.00	
C20-2150-50L	21.37~21.62	50.00	
C20-2175-50L	21.62~21.87	50.00	
C20-2200-50L	21.87~22.12	50.00	
C20-2225-50L	22.12~22.37	50.00	
C20-2250-50L	22.37~22.62	50.00	
C20-2275-50L	22.62~22.87	50.00	
C20-2300-50L	22.87~23.12	50.00	
C20-2325-50L	23.12~23.37	50.00	
C20-2350-50L	23.37~23.62	50.00	
C20-2375-50L	23.62~23.87	50.00	
C20-2400-50L	23.87~24.12	50.00	
C20-2425-50L	24.12~24.37	50.00	
C20-2450-50L	24.37~24.62	50.00	
C20-2475-50L	24.62~24.87	50.00	
C20-2500-50L	24.87~25.12	50.00	
C20-2525-50L	25.12~25.37	50.00	
C20-2550-50L	25.37~25.62	50.00	

• Alloy Steel



Part No.	ØD	L	Insert
C20-2600-50L	25.87~26.12	50.00	CCGT060204 CCFT060204 Select grade from cutting data chart. Screw: NS-25060 Key: NK-T7
C20-2700-50L	26.87~27.12	50.00	
C20-2800-50L	27.87~28.12	50.00	
C20-2900-50L	28.87~29.12	50.00	
C20-3000-50L	29.87~30.12	50.00	
C20-3100-70L	30.87~31.12	70.00	
C20-3200-70L	31.87~32.12	70.00	
C20-3300-70L	32.87~33.12	70.00	
C20-3400-70L	33.87~34.12	70.00	
C20-3500-70L	34.87~35.12	70.00	
C20-3600-70L	35.87~36.12	70.00	
C20-3700-70L	36.87~37.12	70.00	
C20-3800-70L	37.87~38.12	70.00	
C20-3900-70L	38.87~39.12	70.00	

• Alloy Steel



Part No.	ØD	L	Insert
C20-4000-70L	39.87~40.12	70.00	CCGT060204 CCFT060204 Select grade from cutting data chart. Screw: NS-25060 Key: NK-T7
C20-4100-70L	40.87~41.12	70.00	
C20-4200-70L	41.87~42.12	70.00	
C20-4300-70L	42.87~43.12	70.00	
C20-4400-70L	43.87~44.12	70.00	
C20-4500-70L	44.87~45.12	70.00	
C20-4600-70L	45.87~46.12	70.00	
C20-4700-70L	46.87~47.12	70.00	
C20-4800-70L	47.87~48.12	70.00	
C20-4900-70L	48.87~49.12	70.00	
C20-5000-70L	49.87~50.12	70.00	

*Coolant hole heads & kits are available for quick delivery. Call us for a quote. Visit www.everede.net for the full line brochure.

Precisely ground Inserts

-CC030102, CC040102

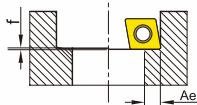
• **NC30** : K20F carbide insert, TiAIN coated, universal grade for cast iron, carbon steel, alloy steel, stainless steel.

-CC040102, CC060204

• **NC2033** : K20F carbide insert, TiAIN coated, good for carbon steel, alloy steel, stainless steel.

• **HP-NC9031**: K20F carbide insert, TiN coated, good for Al, Al-alloy, Copper and non ferrous metal.

• **DM** : PCD brazed tipped insert with a polished and honed cutting edge for fine surface finished and longer tool life.



Inserts

Inserts	NC30	DM	NC2033	NC9031	Dimensions*		
					lc	S	re
CCGT030102	•				3.5	1.4	0.2
CCGT040102	•				4.3	1.8	0.2
CCFT060204			•		6.35	2.38	0.4
CCFT060204HP				•	6.35	2.38	0.4
CCMW060204		•			6.35	2.38	0.4

*Units in mm

Material	Cutting conditions or surface finishes	Grade of insert	Ae Max. inch	SFM	IPR (inch/rev.)
Carbon Steel	Regular cutting	NC2033	.020	394 ~ 656	.002 ~ .004
	Interrupted cutting	NC30	.012	328 ~ 459	.002 ~ .003
Alloy Steel	Regular cutting	NC2033	.020	328 ~ 459	.002 ~ .004
	Interrupted cutting	NC30	.012	262 ~ 394	.002 ~ .003
Stainless Steel	Regular cutting	NC2033	.020	262 ~ 394	.002 ~ .004
	Interrupted cutting	NC30	.012	230 ~ 328	.002 ~ .004
Cast Iron	Regular cutting	NC30	.020	262 ~ 394	.002 ~ .004
	Regular cutting	NC9031	.020	492 ~ 984	.002 ~ .004
Brass, Bronze and Al-alloy Si >6%	Regular cutting	NC9031	.020	492 ~ 984	.002 ~ .004
	Super finished	DM	.012	1640 ~ 6560	.002 ~ .004
Hardened Steel <HRC 50	Regular cutting	NC30	.012	262 ~ 394	.002 ~ .004



EVEREDE TOOL COMPANY
5296 Northwest Highway
Chicago, Illinois 60630

Phone: (773) 467-4200
Toll Free: (800) 621-5486
www.everede.net